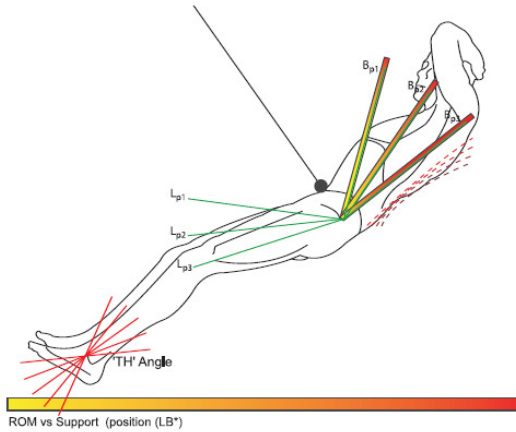


MAGIC MARINE HARNESS TECHNOLOGY

In our Harness Technology we combine the best input of teamriders, kinetic analyses, harness construction and safety.

Kinetic Analyses

Our goal is to make comfortable harnesses that works for sailors on all levels. To reach this goal we set up an analysis to find out more about Support, Range Of Motion (ROM), and their relation in different hiking positions and with different loads.



Analysing the biomechanical part of sailing gives us lots of extra information. This information is a good guideline when considering harness designs. To add 'harness comfort' we describe it as the sum of support & load distribution and unrestricted freedom of movement when use. Support is highly dependent on harness construction. Strap positions, batten stiffness and position, material characteristics and panel layout are the ingredients to work with. The biomechanical analysis tells us how to combine all to create the perfect harness for Olympic racing, long-distance competitions or comfortable cruising in the weekends.

Closely related with support is freedom of movement. Adding support should not restrict range of motion. Although this is a simple conclusion it creates a tough design issue. To ensure freedom of movement without rejecting support we choose to look at it from a dynamic sailing perspective. From this point of view it becomes clear when 'movement' is most important, and in which body position support is most important. For example when trapezing flat out, back support and arm movements play the main role, while for a roll-tack, leg- and upper body movements are most important.

