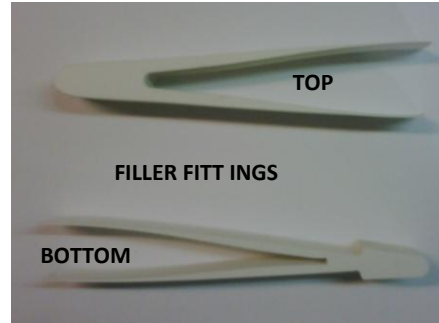


Retrofit * Daggerboardcase insertion kit *
www.nacra.ca



Dear Customer,
Thank you for purchasing the new Nacra F18 Infusion MK2 daggerboards! This is a manual for installing filler fittings in order to use the longer daggerboards into the m/y 2009 and m/y 2010 F18 hulls daggerboard cases.

The kit exists of four parts filling fittings and two pieces of carpet, for the top (deck) and the bottom part of both hulls, which will be glued into the back of the daggerboard cases.



1 DECK



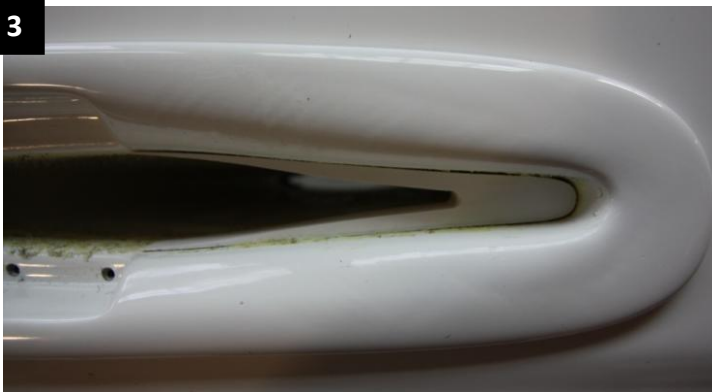
Take off the rubber daggerboard stopper and remove the carpet and 'yellow' glue remains in the top of the daggerboardcases.

2



Clean the case and filler fitting with thinner.

3



Glue the fitting in the hull at the same height the carpet previous was in the case. We recommend you use epoxy glue. (like Araldite)



4



Seal the filler fitting off with silicon.



5

Redo the carpet, clean the surface and just glue the carpet with regular carpet contact glue.



6

Attach the rubber daggerboard stopper again.



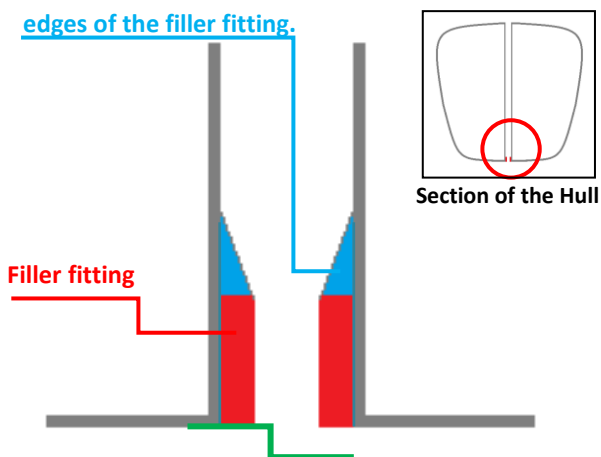
7 BOTTOM



Repeat the same process for the bottom filler fitting part; remove the carpet in the back and glue the part in with the same epoxy glue.



8 Make sure when the fitting is getting glued there is enough glue to make a bit of a slope to protect the edges of the filler fitting.



Place the filling fitting at the same level of the hull and make sure that the seam is filled with the glue.



9

Once the glue is hardened lightly sand the surface.

The bottom part of the centreboard case does not require carpet.

Finished, your boat is faster now!

Always one step ahead...